

Place Standard tool with a Climate Lens

Final Report | December 2022



Public Health
Scotland



Scottish Government
Riaghaltas na h-Alba
gov.scot

sniffer
knowledge brokers
for a resilient Scotland

**Architecture &
Design Scotland**

Ailtearachd is Dealbhadh na h-Alba

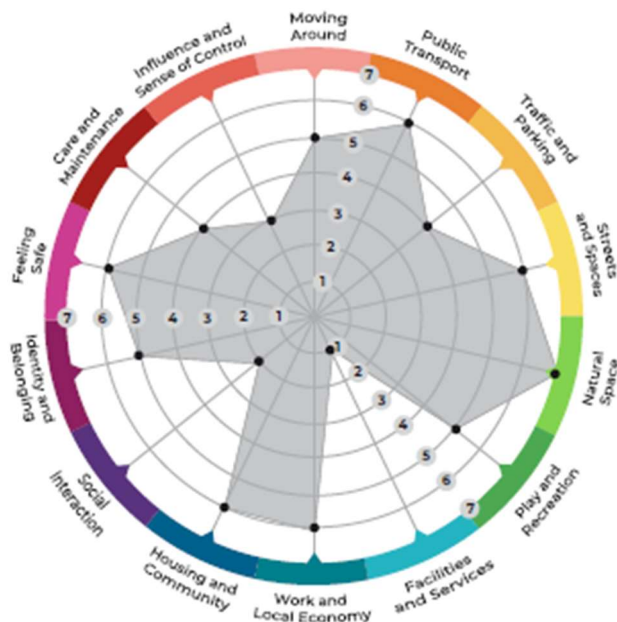
SSN Sustainable
Scotland
Network

ekos
Economic and Social Development

Project Overview

The Place Standard Tool¹ (PST) provides a simple framework to structure conversations about place, based around how place impacts on health and wellbeing.

The 14 themes within the Place Standard Tool (PST) allow individuals or groups to think about the physical elements of a place (such as the buildings, spaces, and transport) as well as the social aspects (like whether people feel they have a say in decisions) and economic aspects (like access to jobs and training). It can help to identify and prioritise actions needed to improve places and support health and wellbeing.



The PST, in use in Scotland since 2015, does not formally consider climate change as a standalone topic or as part of the existing themes. Since 2019, the Place Standard team and national partners have been working to produce a revised version of the PST. As part of this revision process, climate change emerged as a priority to be addressed and strengthened. However, in addition to increasing some content around climate issues within the updated PST launched in October 2022, a need was also identified for a more in-depth tool for considering the place-based dimensions of climate change holistically.

Therefore, this project was conceived in early 2020 to address this need for a more in depth version of the Place Standard Tool with a Climate Lens (PST CL) to consider climate change adaptation and mitigation in more detail in placemaking.

The objective was a tool to help improve understanding of how climate change might play out in a local area, and support communities to design their future place with this in mind. This might mean considering how a place will transition to a net zero future when fossil fuels are no longer used or how their place could better cope with extreme weather and changes to infrastructure, supply chains, health, and wellbeing, that will be impacted by long term climate change.

Project partners

The project was funded by Public Health Scotland (PHS) and the Scottish Government (SG) on behalf of the Place Standard partners. The project was delivered in a collaborative way and involved the expertise of: Sniffer, Sustainable Scotland Network

¹ www.placestandard.scot

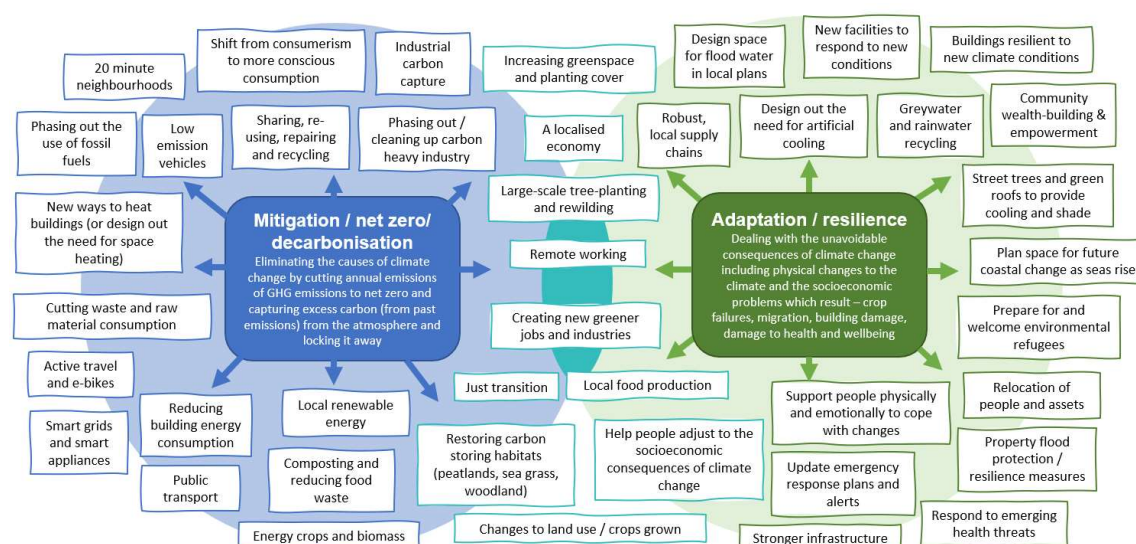
(SSN), Architecture & Design Scotland (A&DS) and EKOS, alongside that of the funders, and the projects which took part in piloting the tool.

Why consider climate change in our placemaking?

- Place has an enormous impact on people's lives and on their health and wellbeing by shaping their opportunities and their choices.
- Climate change poses increasing threats to health, wellbeing, prosperity, biodiversity, whilst place-based action to address climate change offers huge potential to provide health, social and environment co-benefits.
- The places we design today will face very different challenges in future. A responsible approach to placemaking therefore demands consideration of how climate change will impact our places and how the way we live will need to adapt.
- Most of the solutions to the climate emergency, require us to think in a collaborative place-based way, which means framing our thinking within a physical setting and social context. Place-based approaches are essential in taking local action.
- Climate change will widen the gap between rich and poor. Climate solutions must also address inequality and disadvantage. If we take a place-based approach to tackling the climate emergency, we can collectively design local solutions to a global problem which also address other community priorities. For example, promoting health and wellbeing, community wealth building, fair work, and community empowerment.

How will climate change impact our places?

Climate change will affect our places in many ways. Changes are needed both to rapidly reduce carbon emissions and to adapt to the physical and social impacts from the changing climate that are already inevitable as illustrated below:



Place-based dimensions of climate change: Sniffer, 2022

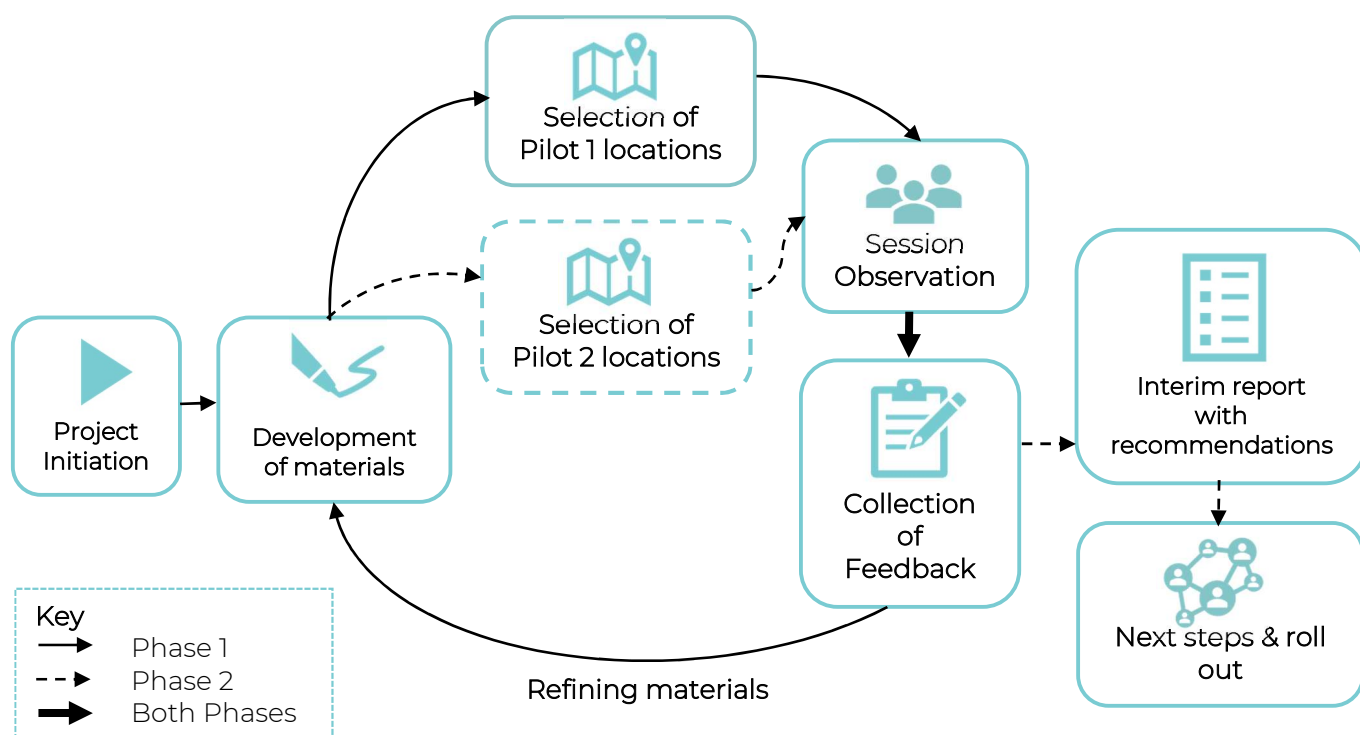
Changes from decarbonisation are shown in dark blue boxes; changes from adaptation to climate change impacts are in green. Mitigation and adaptation are not always neatly separated. Actions that help places to cut emissions *and* increase resilience are in teal.

What is the Climate Lens and how was it developed?

The PST CL materials are a suite of tools for facilitators and organisers of PST sessions which can be used in addition to the existing updated PST resources to help place-making conversations consider the two interrelated aspects of how people and places need to address climate change. The 'Climate Lens' takes the form of:

- extra guidance and questions for each of the 14 Place Standard themes,
- in depth and summary guidance, including a prompt document for facilitators,
- a glossary of terms,
- online and in person-tools to help facilitators host effective PST CL sessions.

Overview of the development process



The draft PST CL tool and supporting guidance were developed collaboratively and trialled with real-life place making projects across Scotland.

How the CL materials have evolved

The project was designed to encourage feedback and allow iterative improvement of the Climate Lens materials as the project developed. Evaluation evidence generated in the form of surveys and session observations was used:

- to document learning from individual placemaking projects,
- identify common/shared learning across the pilots, and
- identify potential solutions to common issues encountered when using the tool.

Findings from the first phase of the pilot were used to develop the draft PST CL materials further, before issuing the materials to a second phase of pilots to test.

Feedback from the second phase and the wider placemaking has fed into the final Climate Lens materials. These incorporate the suggested wording changes and additional resources / tools to help those organising and facilitating future PST CL sessions.

Pilot projects which tested the PST CL

A total of 10 pilot projects were chosen to represent the varied communities, scales, landscapes and placemaking projects being undertaken across Scotland.

First phase pilots - The initial pilots held PST CL sessions between September and November 2021, and are summarised below:

Name	Overview of pilot	Location	Lead
Buckhaven Neighbourhood Plan	Community regeneration project to develop a neighbourhood plan. In person PST CL session held focusing on a community facing multiple deprivation.	Buckhaven, Fife	Fife Council
Climate Ready Strathdon	In person PST CL session held as part of a project to create a place-based climate change adaptation strategy in an isolated rural location.	Strathdon, Aberdeenshire	Aberdeenshire Council
Edinburgh's Thriving Green Spaces	City wide placemaking to inform the city's parks and greenspace strategy and develop masterplans for strategic sites (including Inch Park). In person PST CL sessions including walkabout of the green spaces.	Edinburgh	City of Edinburgh Council
Greater Pollok Placemaking	Part of wider placemaking addressing socio-economic issues, green space, and community access to Pollok Park, included in person PST CL sessions including walkabout of the area.	Greater Pollok, Glasgow	Glasgow City Council

These projects while considering a range of scales of area, and a variety of project types, all held in person PST CL sessions and were led by Local Authorities.

Second phase pilots were chosen to reflect different project leads and session types. The second phase pilots were held between December 2021 and March 2022.

Second phase pilots

Name	Overview of pilot	Location	Lead
Climate Action Town Blackburn	Working with place-makers and communities to initiate collective action in small towns with little previous involvement in climate action; to facilitate long lasting change and deliver coordinated climate action. Mixture of online and in person PST CL sessions.	Blackburn, West Lothian	A&DS
Climate Action Town Holytown		Holytown, North Lanarkshire	
Climate Action Town Stevenston		Stevenston, North Ayrshire	
Key Agencies Green Recovery: Stewarton	Partnership project with East Ayrshire Council and the community in Stewarton to develop a local development framework with potential to link in with a forthcoming community action plan. Online PST CL sessions.	Stewarton, East Ayrshire	A&DS & Key Agencies Group
Live Life Morvern	Community placemaking project focusing on an empowered, remote rural community with a high degree of climate action knowledge and enthusiasm. Online PST CL sessions.	Morvern, Lochaber, Highland	PAS (Planning Advisory Service)
One Carluke	Part of an ongoing placemaking exercise to develop community led place plans, establish a local climate change action group, and regenerate the local area in line with community ambition. In person, indoors PST CL session.	Carluke, South Lanarkshire	ONECAN and South Lanarkshire Council

Feedback from pilot sessions was evaluated using an evaluation framework developed by EKOS consulting.

Review to maximise inclusion and accessibility

The project team created a final version of the Climate Lens Guidance and materials incorporating feedback from all the pilot projects. We then screened and revised the materials, with the support of [Communication Inclusion People](#) a social enterprise who

specialise in inclusive communication. At the time Communication Inclusion People were also producing an Inclusive Communication toolkit to support all versions of the Place Standard tool. The team undertook this review to ensure that the final resources were as accessible as possible to everyone including those with a barrier to communication. This has resulted in resources designed to be picked up and used by anyone, regardless of their first language, disability, educational background and understanding of climate change. Once this review was undertaken the materials were laid out in a visual, user-friendly format by Architecture & Design Scotland and launched online.

Key Learning

Responding to the climate emergency requires a transformation of Scotland's places over the next 20-30 years. There is much to do and a limited window for action. The PST CL pilot raises some important questions which need to be resolved.



The relationship between the PST and the PST CL

When asked whether they felt that the CL would be useful in all types of placemaking or if there were settings where it would not be appropriate to consider climate change; feedback was unanimous with facilitators and participants struggling to envisage a situation where it would not be appropriate or responsible to address climate change when considering the future of our places. Whilst the need remains for a generic version of the PST as one of its strengths is the flexibility of application to different settings and different agendas, those using the tool felt that in many cases the CL should be considered the preferred approach. This is because designing places without considering large scale transformative trends occurring now and, in the future, would be short-sighted.



Roll-out across all communities

A particular strength of the PST is in addressing inequalities and promoting inclusion therefore its use has been particularly supported in settings facing socioeconomic disadvantage. Evidence tells us that the poorest communities in Scotland are likely to be the most vulnerable to climate change impacts but are least responsible for the carbon emissions that are fuelling the climate crisis. The role of facilitators in emphasising the co-benefits that tackling climate change can have for other local priorities, will be important in maximising engagement without adding anxiety especially in communities who may already be under stress. The open questions and holistic nature of the PST enables conversations which may begin with immediate community priorities to easily expand to more tangential or daunting issues such as climate change and make them more immediately relatable to people's everyday lives. Because of this, the PST CL can empower communities, enabling them to be part of collaborative action tackling local issues that also respond to the climate emergency.

Additionally, the pilot found that Climate Lens discussions were a good way to start people thinking about personal actions they could take to reduce their climate impact, therefore there is a real need for PST CL sessions to also take place with more affluent communities in Scotland because these communities have the largest per capita carbon footprints.



Visualising future scenarios

The pilot demonstrates that while the PST CL facilitated real consideration of changes in today's weather and how to increase resilience to cope with current conditions; without linking to future projections of change, it is difficult to get people to think beyond current extremes and make a mental leap to consider the transformation to society that is inevitable over the next 2-3 decades. People tend to be able to envisage the next incremental change but not the transformative changes that we are facing and need to embrace. Visualising what good adaptation looks like is harder for most audiences, than asking them to think about what a net zero place might be like. There is an appetite to develop new tools to support this process.



Ongoing review and agility of resources

Given the considerable pace of decarbonisation needed to meet Scotland's climate change ambitions and become climate resilient, the PST CL materials will need to be refreshed regularly to ensure that the tool continues to be relevant. As evidence becomes clearer and policy and pathways for action evolve over time, asking more challenging questions of local communities will be necessary as they progress actions.



Joining up the pieces

Climate action and placemaking is a crowded, complicated, and busy space in Scotland. It is easy for organisers and facilitators to feel overwhelmed by the considerable activity emerging in this area, and often limited read across between:

- local place plans,
- local development plans
- regional land use partnerships,
- local climate action plans,
- climate action hubs and towns,
- SECAPs (Sustainable Energy and Climate Action Plans) etc

The PST CL offers the potential to create better linkages between all these activities by offering a shared perspective / language and by illustrating the potential for joined up co-benefits. Holding PST CL sessions involving key actors will allow placemakers to forge connections and be supported by community-led activity across Scotland such as Transition Towns, SCCAN regional network activities and other local health, wellbeing and environmental action and community development groups. The PST offers opportunities for collaboration and can provide outputs which are useful to a multitude of parties, i.e.: from Local Outcome Improvement Planning to emerging community land trusts etc.

The 2022 Climate Lens resources

What is included in the Climate Lens?

The completed Climate Lens launched in September 2022 is a suite of tools for facilitators and organisers of Place Standard sessions, including:

- extra guidance and questions for each Place Standard theme,
- a climate change prompt document for facilitators,
- a glossary of terms,
- support videos,
- online and in person-tools to help facilitators host effective climate-focussed sessions.

Guidance for facilitators and session organisers

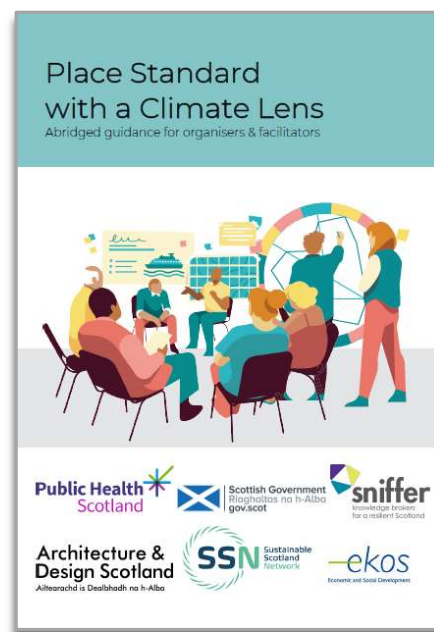
The Climate Lens guidance resources include an in-depth guidance document aimed primarily at those organising a Climate Lens session. This is called *The Place Standard with a Climate Lens Detailed Guidance* and provides step-by-step support on how to plan and host a PST CL event to achieve productive conversations focussed on the important relationship between climate and place.



This guidance is structured into 9 steps which take users from the first stages of planning a PST CL assessment through to how to communicate with participants after Climate Lens sessions have been concluded.

This guidance document follows the same, easy to use approach as the core Place Standard tool. The Place Standard with a Climate Lens Detailed Guidance can be accessed from this page <https://www.ourplace.scot/Place-Standard-Climate>

An abridged version of the Climate Lens is also available called *The Place Standard with a Climate Lens Abridged Organiser and Facilitator Guide*. This lighter touch version was developed for facilitators and contains the principles and process for delivering an effective Climate lens conversation and summarises all the Climate Lens prompts. This document is designed for use within a Climate Lens session, where it can be consulted on the hoof to answer questions as they arise and to provide a central repository of key terms and all the core PST and Climate Lens prompts. The Place Standard with a Climate Lens Abridged Guide can be from this page <https://www.ourplace.scot/Place-Standard-Climate>



Facilitation resources

In addition to the guidance, the Climate Lens includes a suite of facilitation resources designed to help session organisers get started on running their own assessment. These resources recognise that not all organisations will have confidence or capacity to address the facilitation, climate change and placemaking aspects of a Climate Lens assessment and have been designed to build the skills, knowledge, and confidence of facilitators. As such these resources were designed to take the 'leg work' out of hosting a Climate Lens session and have been released in an open-source format with the intention that users can adapt or tailor them to suit the needs of their assessment.

The additional facilitation resources can be accessed at <https://www.ourplace.scot/place-standard-climate-lens-resources> and comprise:

- An introductory presentation for a PST CL session which introduces the key themes and terms, sets the scene, provides a draft agenda and next steps. The presentation includes full speakers notes. This also includes
 - Slides for each theme detailing core PST and Climate Lens prompts
 - With space for scoring in an interactive session (which can be held in person or online) to capture feedback interactively.
- Customisable templates for use on online whiteboards.
 - These have been designed so that they are not tied to one whiteboard platform and can be modified by facilitators and organisers to suit their place and the platform that they are using.
 - The templates include both core PST prompts and those for the Climate Lens.

Examples of these customisable white board templates for the Streets and Spaces theme of the PST CL are given overleaf. The top image includes the online

whiteboard template for core Place Standard prompts, and the bottom image shows the template for the same theme, with the Climate Lens prompts:

04 Streets & Spaces

What are the buildings, streets and public spaces like in my place?

Things to Think About...

- What are streets and spaces like?
- Are there points of interest?
- Is it easy to find my way around?
- How accessible are spaces for everyone?
- Are there any challenges?

Voting

1 2 3 4 5 6 7

General Feedback

Type your feedback here

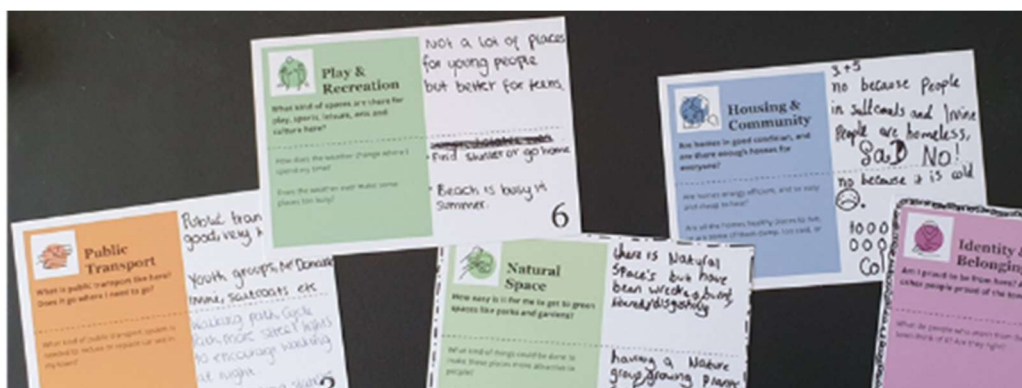
04 Streets & Spaces

- Where could streets and spaces have trees and more green spaces? This can help to improve air quality, store carbon, and grow food?
- How can we enhance streets to make them an appealing place to spend time and carry out daily activities on foot?
- How can we make streets safe and inclusive for everyone? Including those with physical and sensory disabilities?
- How can we make sure streets and spaces are still safe and pleasant places to walk, meet or socialise even in bad weather?
- Or do they go elsewhere?
- Are high temperatures an issue in areas where there is no shade?
- Could streets and urban spaces be rearranged to make room for trees and greenspace? These can provide benefits in reducing temperature extremes and surface water flooding.

General Feedback

Type your feedback here

- Printable resources such as postcards and PST theme wheels for use at in person PST CL assessments. These have been designed as easy and engaging ways to gather the views of participants and include both the core and Climate Lens prompt questions.



- Videos of presentations given at the Early Adopters webinar, described in the next chapter are also available online.

Project launch and ongoing support for users

Materials launched online

The PST CL resources went live on the Our Place website in September 2022, and can be accessed at: <https://www.ourplace.scot/Place-Standard-Climate>

Official launch event

The Place Standard with a Climate Lens was officially launched during Scotland's Climate Week at the Local Climate Democracy event on Monday 26 September 2022. This event was held on Teams, chaired by Professor Dave Reay from Edinburgh Climate Change Institute, and opened by Patrick Harvie MSP. The event featured:

- Members of Scotland's Climate Assembly speaking about how they have championed climate action locally since the Assembly's conclusion.
- Dr Oliver Escobar introducing participative processes and practical tips for communities.
- The PST CL team launching the Place Standard Tool with a Climate Lens and showcasing the key learnings from the pilot project. The PST CL launch raised awareness of how the new tool will help stakeholders to consider how climate change will play out in a local area; and inspire locally appropriate climate action, while also delivering health and wellbeing, social, economic, and environmental benefits.

At the launch event, further support for those wishing to use the PST CL was announced in the form of an online in-depth webinar for early adopters of the tool. This was scheduled for late October 2022, one month after the launch of the materials in the public domain, allowing those interested in the tool to browse the PST CL and supporting resources and start to familiarise themselves.

Support for early adopters

From Spring 2022 when the second round of pilots were ending, details of those who subsequently expressed an interest in using the Climate Lens were collated as a cohort. This allowed the project team to communicate directly with those wishing to become early adopters of the Climate Lens to raise awareness of support available and training opportunities.

An online workshop was held for those wishing to make immediate use of the PST CL, on October 25, 2022. The event was publicised by various channels including:

- At the launch of the Climate Lens in Scotland's Climate Week.
- Via the social media newsletters and websites of the project partners.
- On Eventbrite (which was used to ticket the event).

- By direct email to the early adopter 'cohort' who had expressed an interest in becoming early users of the PST CL materials.
- To the Adaptation Scotland Benchmarking Working group – a group of climate change leads from public bodies across Scotland

55 people attended this Place Standard with a Climate Lens Early Adopters event from all over Scotland from a diverse range of organisations including:

- Local authority (23)
- Community group, trust, or partnership (10)
- NHS or NHS Trust (6)
- Other Public Sector (3)
- Third sector (3)
- Academic institute (3)
- Enterprise agency (2)
- Other (5)

An overview of this event is provided below:

Name	Presenter	What was covered
Welcome	Kat Hasler, Scottish Government	Setting out the centrality of the place principle in government priorities and policy making and providing background to the project. Initial poll to assess the confidence of delegates in understanding and communicating how climate change may affect their place.
An introduction to the Place Standard with Climate Lens	Aoife Hutton, Sniffer	The collaborative and iterative development of the resources, key learnings from the pilots and why we need to consider climate change in placemaking today.
Panel discussion with pilots and the project team	Chaired by Sam Whitmore of Public Health Scotland and including representation from 2 of the pilot projects (Morvern and Carluke).	This session provided examples of real-life use cases and how PST CL can be integrated into different place making processes. It also enabled the audience to ask questions to those who developed and trialled the materials.
Overview of materials and	Chiara Fingland, Architecture &	Chiara talked delegates through the various facilitation resources including

practical considerations	Design Scotland	where to access them and how to use them. This session also highlighted practical lessons learned to maximise engagement and inclusion
Breakout session 1: Understanding use cases	Led by Aoife Hutton, Sniffer	Using online whiteboard tools. This session allowed participants space to share their own context and reasons for using the tool, give feedback and allowed the project team to gather ideas on what ongoing support might be helpful.
Breakout session 2: Using the Place Standard with Climate Lens	Led by Aoife Hutton, Sniffer	Using online whiteboard tools. This session allowed participants to become familiar with format of prompt questions and holding a Climate Lens session online.
Next steps	George Tarvit, Sustainable Scotland Network (SSN) and Kat Hasler, Scottish Government	Second poll to assess any change in the confidence of delegates regarding their understanding of how climate change and climate action affect your place. Details were also given of the animation resource and how the project team would address any issues or questions raised during the session.

The learning outcomes we sought to achieve via this event were:

- to empower a cohort of place makers from across Scotland to become confident users of the PST CL resources
- to upskill them with greater understanding of the place-based dimensions of climate change
- help early adopters gain confidence in using the PST CL as a vital participatory and inclusive approach in their placemaking
- to enable local responses to the climate emergency to become a central part of placemaking across Scotland.

Feedback from the event suggests that considerable progress toward these learning outcomes was achieved. 100% of attendees who gave the feedback on the early adopters' webinar said that they felt more confident in their understanding of the place-based implications of climate change and in using the PST CL.

Feedback was also gathered on the ways in which early adopters were planning to use the tool, this is summarised below:

Top 5 use cases

1. Community engagement and consultation (33%)

2. Local Place Plans / Locality planning (16%)
3. To develop net zero plans or strategies (13%)
4. To help facilitate (climate) conversations or workshops (7%)
5. Local Development Plan (7%)

Other planned uses cited by early adopters

- Use by a community group (4%)
- To develop climate action networks (2%)
- As part of risk, vulnerability, and opportunity assessment process (2%)
- Evaluation of project business cases (2%)

Places to attend the follow-on early adopters' webinar were limited to 50 allow meaningful dialogue and participation in the interactive elements of the session. The event was rapidly oversubscribed, demonstrating the popularity of the PST and genuine enthusiasm for considering climate change in placemaking across Scotland.

To maximise inclusion the presentations from this session were recorded and are accessible online providing an ongoing resource for those unable to attend on the day, or those just coming to the PST CL. The recordings can be viewed here:

<https://vimeo.com/764508187> and will soon be available on the Our Place website <https://www.ourplace.scot/Place-Standard-Climate>

Other events

Several other awareness raising events have been held to embed the Climate Lens materials out 'in the wild' and empower communities, community planning partners to use them in their placemaking. Some of the other awareness raising and training events held in the 2.5 months since the launch of the Climate Lens include:

05 October 2022 Place and Wellbeing Alliance launch event

A hybrid event was held with an in-person element in a central Glasgow location, and with participants from across the Place and Wellbeing Alliance being able to dial in remotely. This session covered a range of updates to Place Standard tools including the new accessible version, and an introduction to the newly released 2022 version of the Place Standard tool, in addition to the Climate Lens. Participants came primarily from a public health or planning background.

03 November 2022 Scottish Government Lunch and Learn event

The Scottish Government holds regular learning lunch events for civil servants working across the government. This event was an important opportunity for the Place Standard with a Climate Lens materials to get in front of decision makers and policy makers for whom climate change, and place making may not have been something they were familiar with. The event was held online on Teams and over 70 people from across Scottish Government were in attendance. The materials prompted enthusiastic discussion and raised awareness of this vital tool to support participatory placemaking and to gather local knowledge and opinions.

9-12 November 2022 European Public Health Conference workshop in Berlin.

This event offered the opportunity to present the Climate lens resource development and integration with the Place Standard Tool to an international audience. This was an in-person event and offered as a workshop to introduce the climate lens and share the different approaches in Scotland and Germany to adding climate to the Place Standard. Tackling the climate emergency is one of the most serious issues facing our places and adding a “climate lens” to the Place Standard Tool offers the potential to maximise co-benefits to drive fair and just solutions that support health, wellbeing, and equality. The workshop was well attended, and the audience was positive and enthusiastic.



01 December 2022 Highlands and Islands Place Based Adaptation - Exploring Local Knowledge event

This event was organized by Highland Adapts, Adaptation Scotland and Highland and Islands Enterprise (HIE). This was a hybrid event with participants from across Scotland's remotest regions attending either in person at the HIE offices in Inverness or joining remotely. The 37 participants came from as far afield as Yell in Shetland, Stornoway and Argyll and Bute. Participants had the chance to use the PST CL live in both in person and online sessions maximizing their familiarity with the breadth of the facilitation tools available for using the Climate Lens. Feedback was positive and enthusiastic and several of those attending had already begun to use the Climate Lens with their communities and were able to speak to the group about their experiences, highlighting the flexibility and accessibility of the materials.

The events have been well attended and feedback from participants indicates a very positive reception to the PST CL resources and their ability to add a deeper understanding of how Scotland's places will change because of the transition to net zero and the impacts of unavoidable climate change.

Coming soon in January 2023

- Animation materials developed in partnership with the media co-op will be launched to introduce the place-based dimensions of climate change. media co-op is a social enterprise which specialises in participatory media projects where people take a genuinely active role in production. This animation has been designed for
 - For use on social media to raise awareness of the issues
 - For session organisers to use to publicize PST CL sessions
 - And to play at the beginning of a PST CL session to set the scene.

Accessing the Place Standard with a Climate Lens resources

The resources from this project are available at:

<https://www.ourplace.scot/Place-Standard-Climate>

www.ourplace.scot